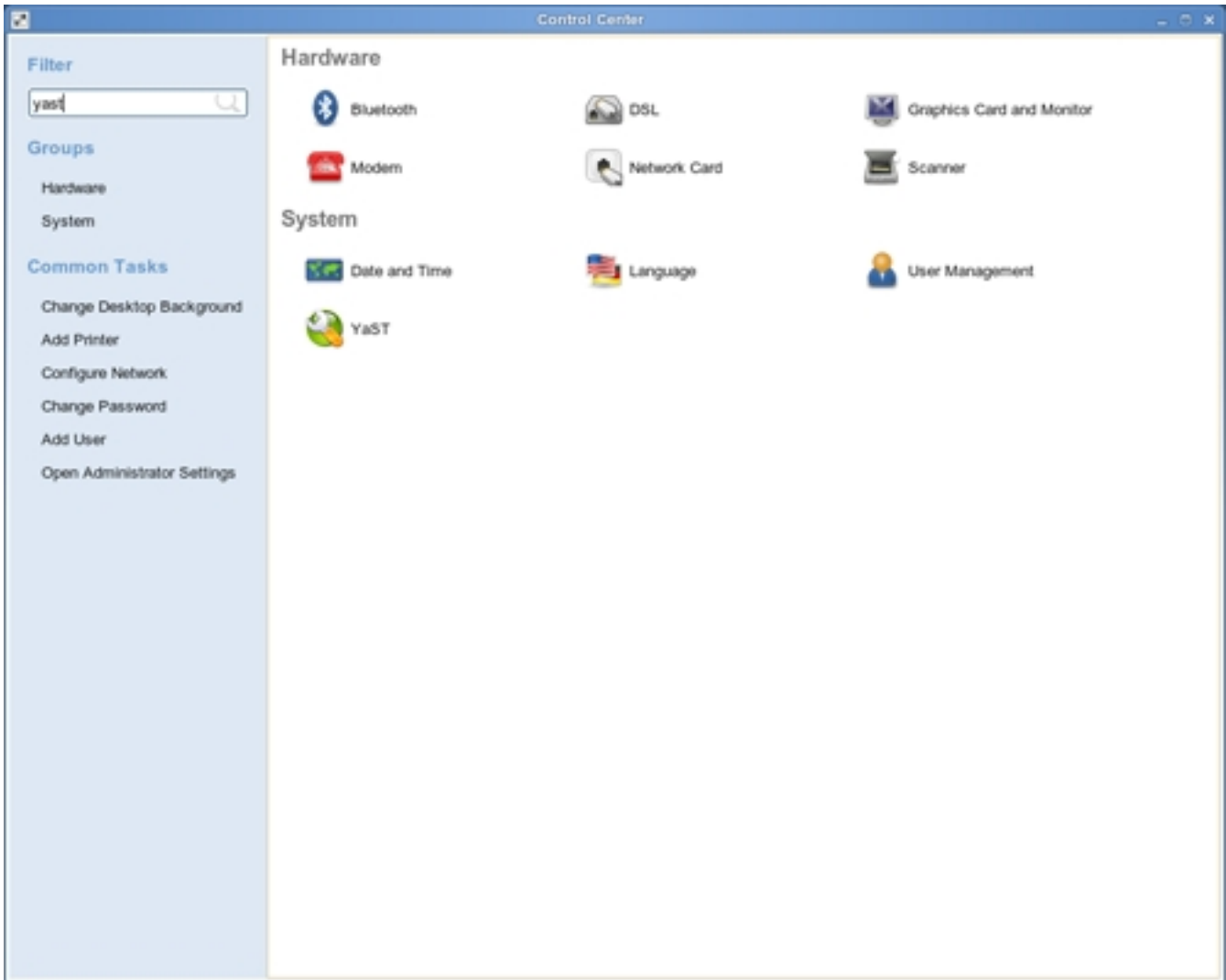


Add Printer HP-LaserJet 1022n (Network Printer)

1. Computer | Control Center | Filter yast YaST
2. Printer
3. Add Next
4. Network Printer Next
5. Print Directly to a Network Printer Next
6. Direct TCP Port Printing Next
7. IP Address Add Next
- 8.

HP-LaserJet1022n

Written by Mr. Sontaya Photibut
Saturday, 02 May 2009 19:23



HP-LaserJet1022n

Written by Mr. Sontaya Photibut
Saturday, 02 May 2009 19:23

