

Clustering

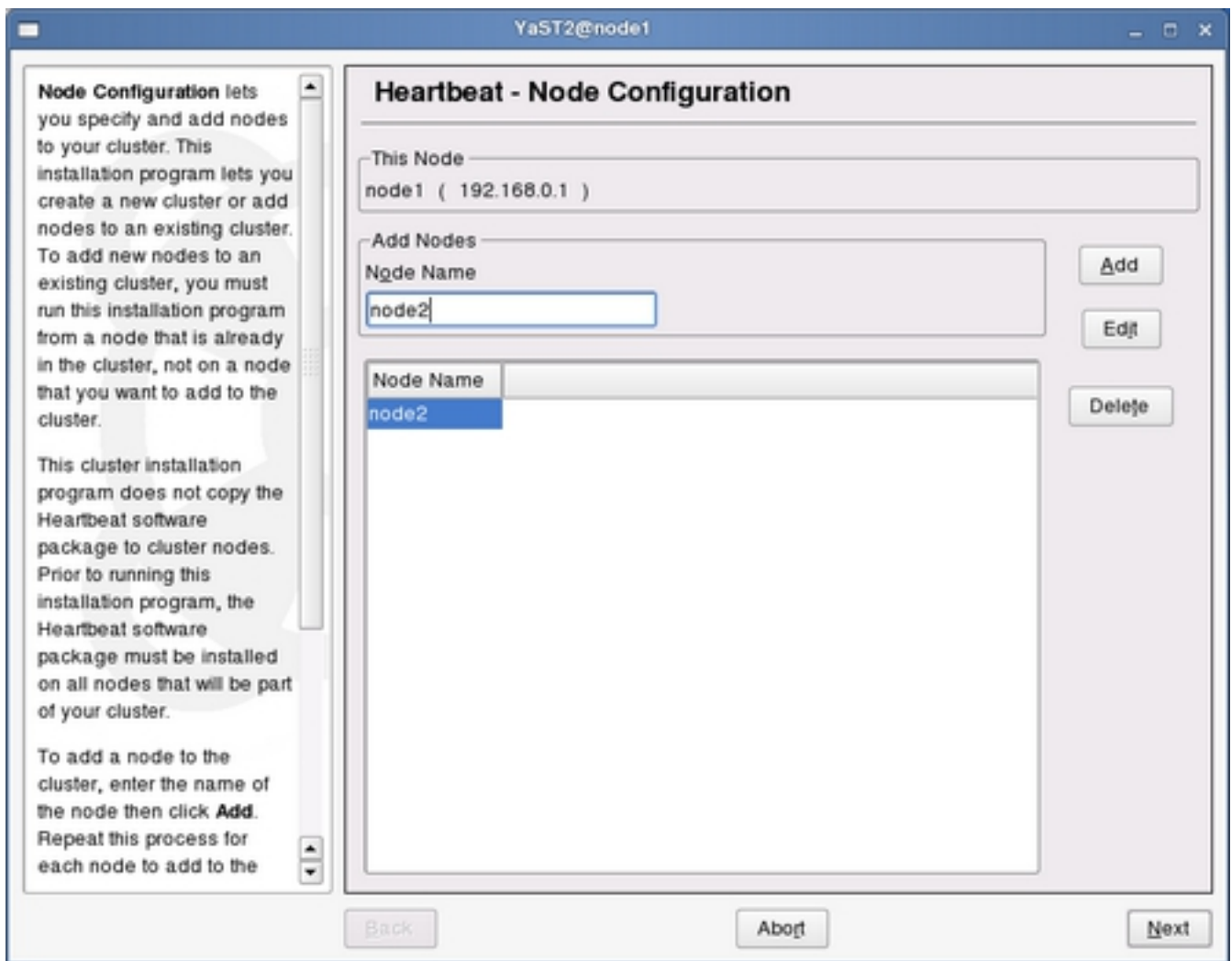
Written by Mr. Sontaya Photibut
Saturday, 02 May 2009 16:40

Heartbeat 2

Heartbeat 2 Open Source Clustering Software

YaST -> System -> High Availability | Add | node2 | Next

2. "Heartbeat - Media Configuration Next | Continue



Clustering

Written by Mr. Sontaya Photibut
Saturday, 02 May 2009 16:40

Heartbeat Media Configuration lets you specify the method Heartbeat should use for internal communication between cluster nodes. This provides a way for cluster nodes to signal that they are alive to other nodes in the cluster. For proper redundancy, you should specify more than one heartbeat medium if possible.

Choose at least one **Heartbeat Medium** and, if possible, two or more. After specifying a heartbeat medium, click **Add** to add that medium type to Heartbeat.

If you choose **Broadcast**, select one of the available network devices in the device list.

For **multicast**, choose a network device. multicast

Heartbeat - Media Configuration

Heartbeat Medium

Broadcast Device: eth0

Multicast Multicast Group: Device: eth0 TTL: 2

Medium	Options
bcast	eth0

Warning: No redundancy in the Heartbeat communication channels. Multiple media should be configured to reduce the likelihood of critical split brain scenarios.

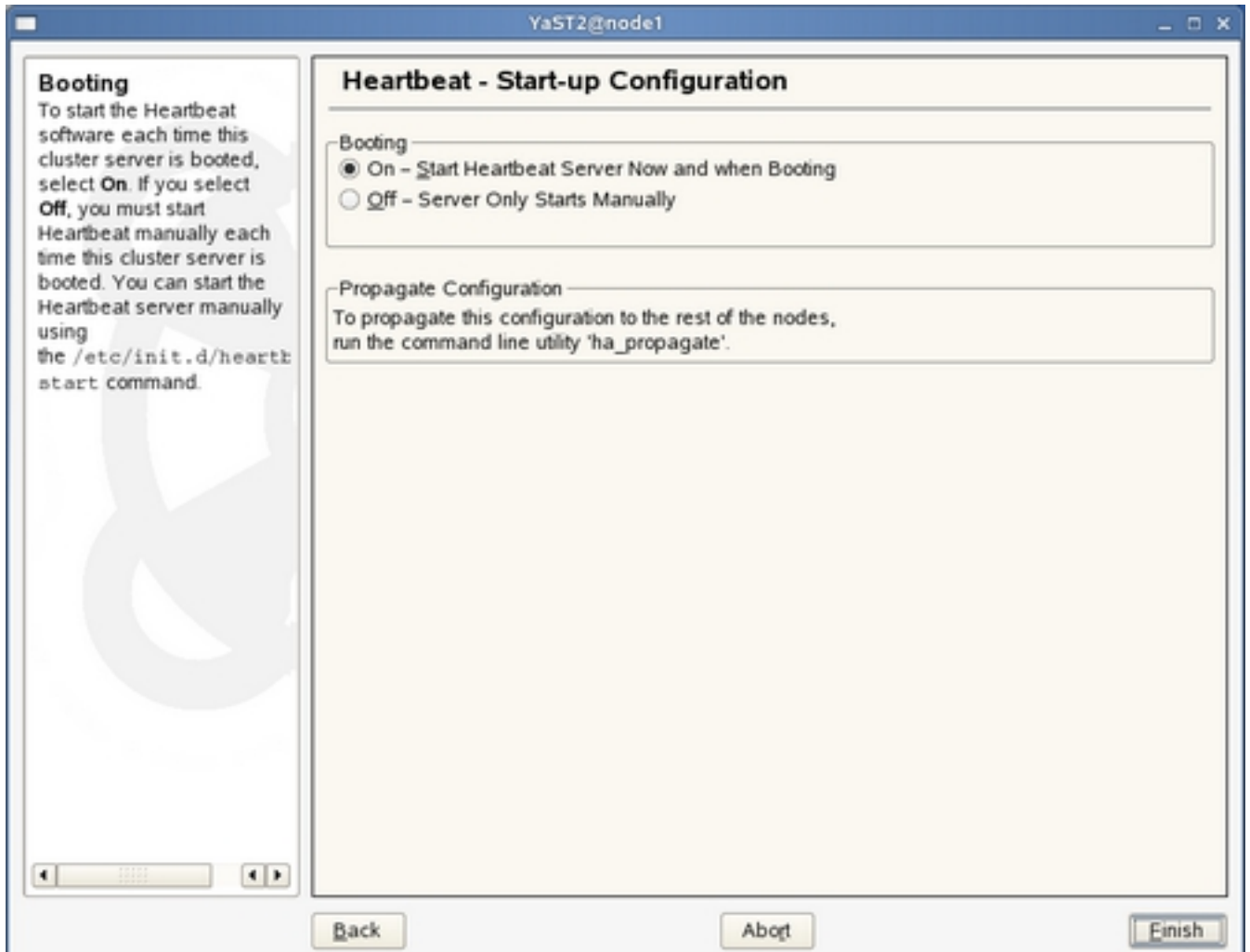
Continue Cancel

UDP Port: 694

Back Abort Next

Clustering

Written by Mr. Sontaya Photibut
Saturday, 02 May 2009 16:40



75 "AddCluster" "ipaddr" "Type" "10.0.0.13" "IP" "Add

Clustering

Written by Mr. Sontaya Photibut
Saturday, 02 May 2009 16:40

Linux is a multiuser system. Several different users can be logged in to the system at the same time. To avoid confusion, each user must have a unique identity. Additionally, every user belongs to at least one group.

Use this dialog to get information about existing users and add or modify users.

To shift to the group dialog, select **Groups**.

To create a new user, click **Add**.

To edit or delete an existing user, select one user from the list and click **Edit** or **Delete**.

Users and groups are arranged in various sets. Change the set currently shown in the table with **Set Filter**. Customize your view

User and Group Administration

Users Groups Filter: System Users

Login	Name	UID	Groups
at	Batch Jobs Daemon	25	at
bin	bin	1	bin
daemon	Daemon	2	bin,daemon
ftp	FTP Account	40	ftp
games	Games Account	12	users
gdm	GNOME Display Manager Daemon	50	shadow
hacluster	Heartbeat Processes	90	haclient
haldaemon	User for haldaemon	101	haldaemon
lp	Printing Daemon	4	lp
mail	Mailer Daemon	8	mail
man	Manual Page Viewer	13	man
messagebus	User for D-BUS	100	messagebus
news	News System	9	news
nobody	Nobody	65534	nogroup,nobody
ntp	NTP Daemon	74	ntp
postfix	Postfix Daemon	51	postfix
root	root	0	root
sshd	SSH Daemon	71	sshd

Add **Edit** **Delete** **Set Filter** **Expert Options...**

Back **Abort** **Finish**

Clustering

Written by Mr. Sontaya Photibut
Saturday, 02 May 2009 16:40

YaST2@node1

Enter the **User's Full Name**, **Username**, and **Password** to assign to this user account.

When entering a password, distinguish between uppercase and lowercase. Passwords should not contain any special characters, such as accented characters.

With the current password encryption (Blowfish), the password length should be between 5 and 72 characters.

Valid password characters are letters, digits, blanks, and #*.,.:_-+!\$%&/?({})=.

To ensure that the password was entered correctly, repeat it exactly in a second field. Do not forget your password.

For the **Username**, use only

Existing System User

User Data Details Password Settings

User's Full Name
heartbeat processes

Username
hacluster

Password

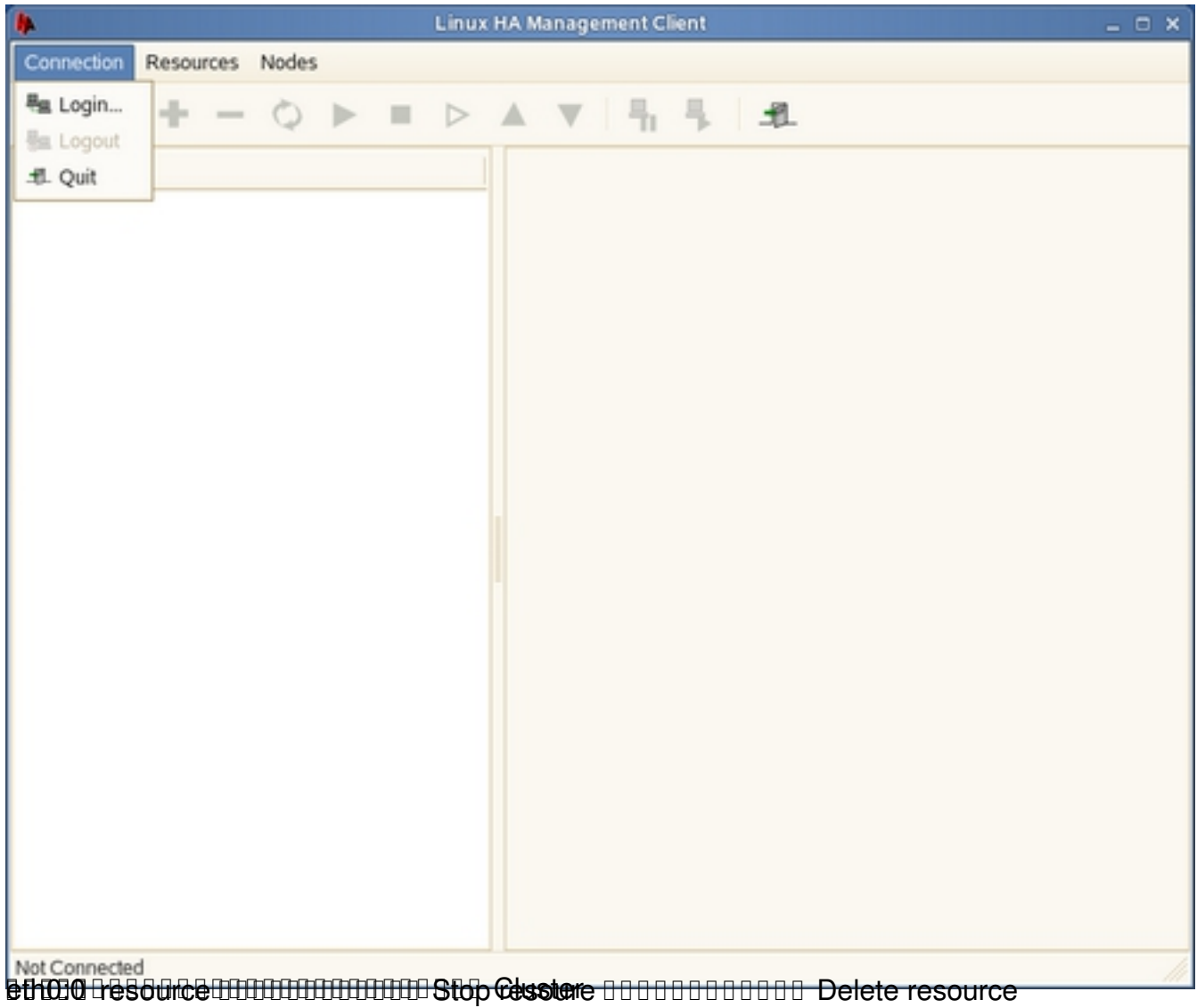
Confirm Password

Disable User Login

Cancel Accept

Clustering

Written by Mr. Sontaya Photibut
Saturday, 02 May 2009 16:40



Clustering

Written by Mr. Sontaya Photibut
Saturday, 02 May 2009 16:40

